



Temperature monitoring system (Image analysis)

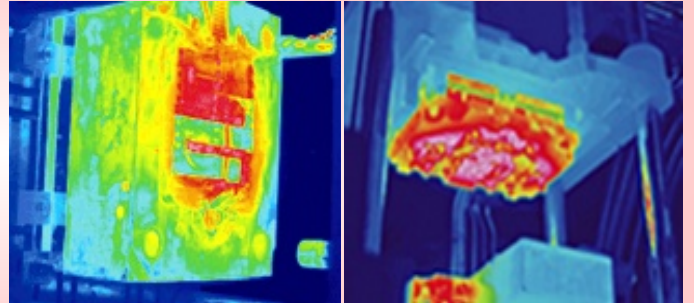
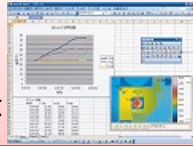
Temperature monitoring system using a thermographic camera. Continuous temperature monitoring and thermal analysis in the manufacturing process to achieve improvement of quality of the product. It can be used as a means of non-destructive analysis in research and development as well.

<Metal mold temperature monitoring>

It performs real-time temperature control of the metal mold, to achieve improvement of quality of the product. Improvement of quality of the product and elimination of defects can be achieved by use of thermal analysis. If you are not able to get close to the subject, the temperature can be measured more accurately with the housing of the camera.

<Purpose of use>

- As a tool to improve productivity
- As a tool for research and development

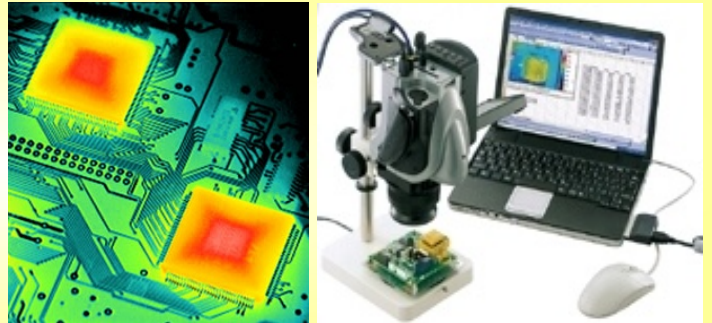


<Electrical circuit inspection>

Defects are found in the research and development stage by performing a thermal analysis of complex circuit board. By accurately measuring and analyzing the heat, accidents after product shipment and recall can be eliminated in advance to cut unnecessary costs.

<Purpose of use>

- As a tool to inspect products before shipping
- As a tool to improve productivity
- As a tool for research and development



Thermography can be used for the purpose of 'Disaster monitoring' and 'Security monitoring', not only as a monitoring, controlling and research and development tool at the production line. There are so many applications.

Above are some installation examples. There are many more applications in various industries and fields. -Electric appliances, food, medicine, manufacturing (Steel, iron, engines, etc.), etc.

Mitsuwa Electronic selects,

and provides thermography that is suitable for your needs.

Various thermographic cameras are available. Please give us your requests.



Thermography has a wide range of applications.

- Need to measure the temperature of the object whose temperature is changing rapidly.
 - ⇒ We have cameras with full-frame speed of 1 to 125Hz
- Want to measure temperature in harsh environments such as in water or oil, etc.
 - ⇒ We have cameras with dedicated housing.
- Want to carry the camera around easily.
 - ⇒ We have portable cameras.

Contributing to the system of the future...



Mitsuwa Electronic Co., Ltd.

3-69-1, Johoku-cho, Nishi-ku, Nagoya-city 451-0023
TEL : (052)521-4663 / FAX : (052)521-7612
URL : <http://www.nets-mitsuwa.co.jp>